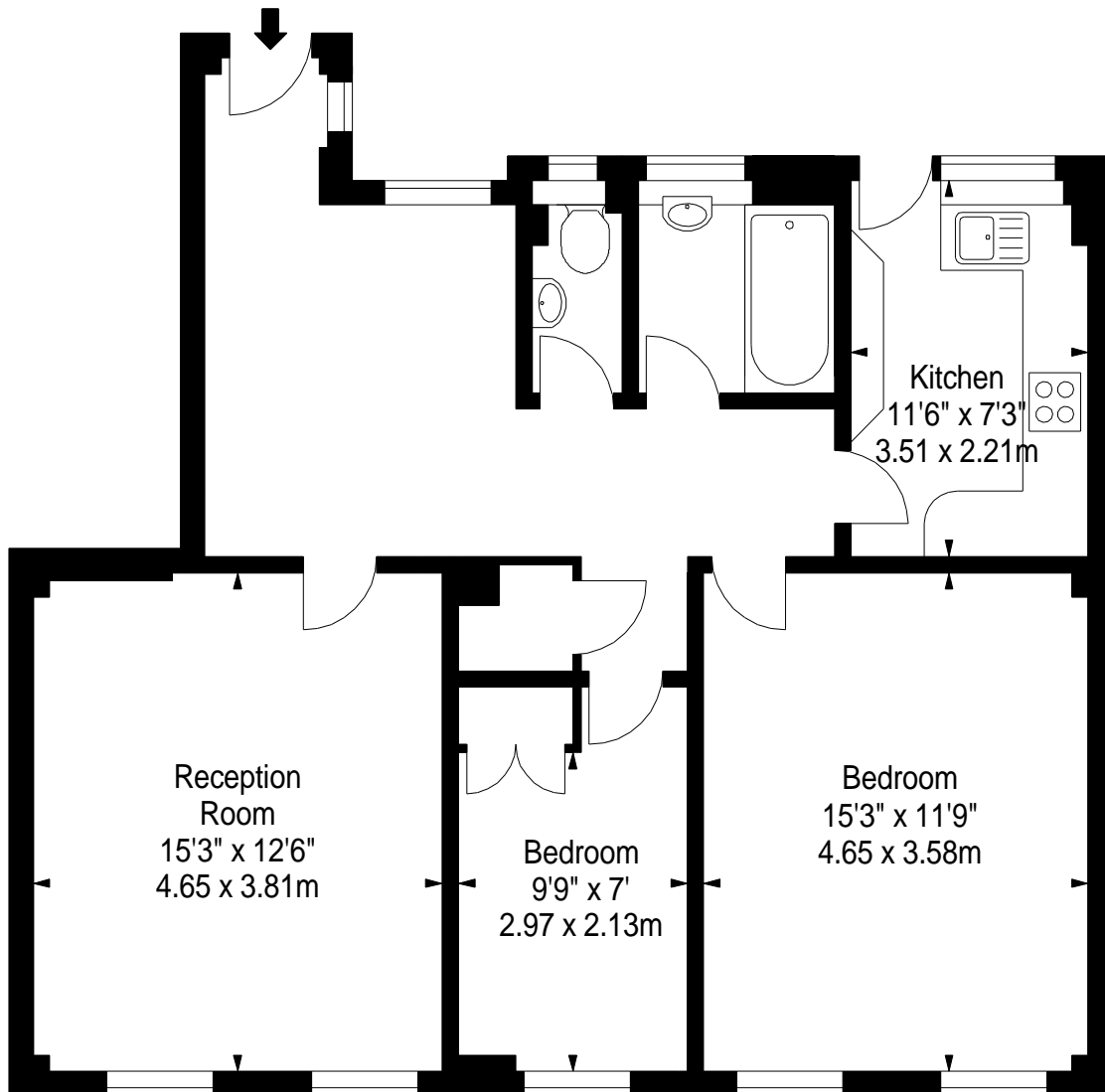


# 27 PELHAM COURT, SW3

APPROX. GROSS INTERNAL AREA \*  
820 Ft<sup>2</sup> - 76.18 M<sup>2</sup>

ILLUSTRATION FOR IDENTIFICATION PURPOSES ONLY. NOT TO SCALE  
\* As Defined by RICS - Code of Measuring Practice



FIRST FLOOR

**BKR**

[www.bkrfloorplans.co.uk](http://www.bkrfloorplans.co.uk)  
T: 0845 257 2023  
© BKR 2010